

Hand Press Fixture Kit

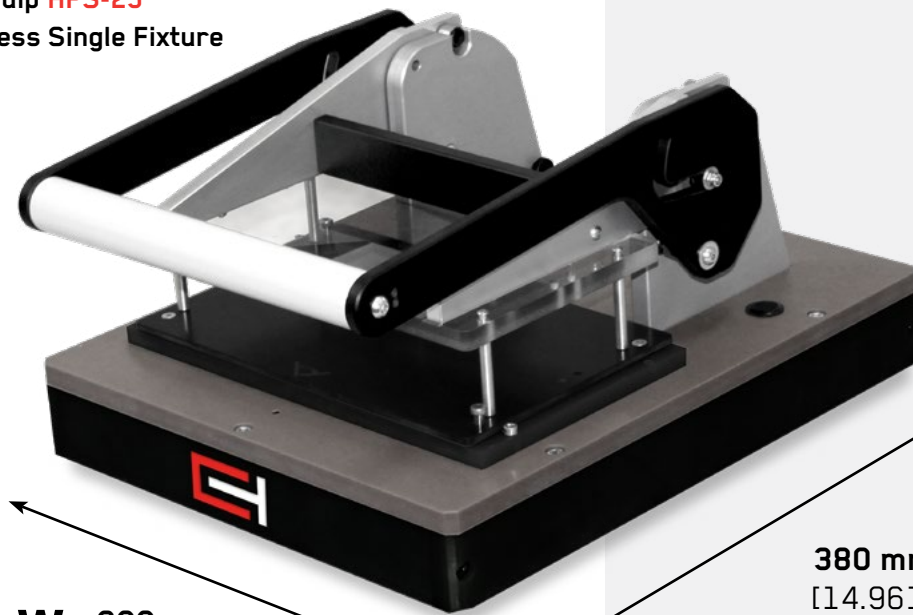
HPS-25

Equip-Test R&D department has designed a new **Hand Press Fixture** for low pin-count applications.

Ideal for flash programming, rework purposes.

As it has an exchangeable kit feature, it is perfect solution for small, middle batch and /or high-mix productions.

Equip **HPS-25**
Hand Press Single Fixture



W 300 mm
[11.811]

H

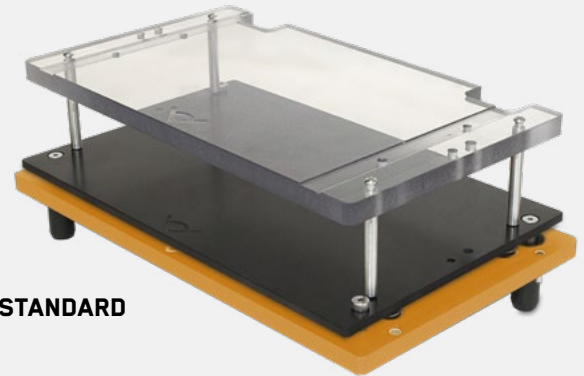
200 mm
[7.874]
(closed)

360 mm
[14.173]
(opened)

380 mm
[14.961]

D

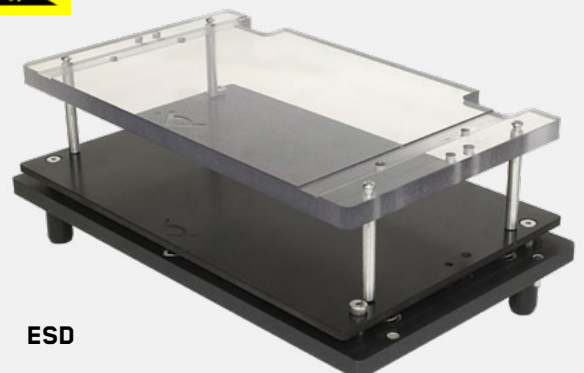
Equip **EXCH-HPS-25**
Exchangeable Kit (Standard)



STANDARD



Equip **EXCH-HPS-25-ESD**
Exchangeable Kit (Optional)



ESD

Technical Features:

- Housing Type: Straight with Single Well
- Maximal Usable Area:
200 mm x 125 mm
[7.874 in x 4.921 in]
- Contact Force Generation: Manual
- Ergonomic Handle for easy closing
- Easy Maintenance & ESD Safe (optional)
- Exchangeable Kit (EXCH - HPS - 25)
- Paralell Contact Stroke: 6.4 mm [0.253 in]
- Contact Force: maximum 300 N
- Max. Component Height: 30 mm [1.181 in]
*(PCB is 1.60 mm [0.063 in] thick)
- Opening Angle (Drive Unit): 80°
- Weight: approx. 4 kg



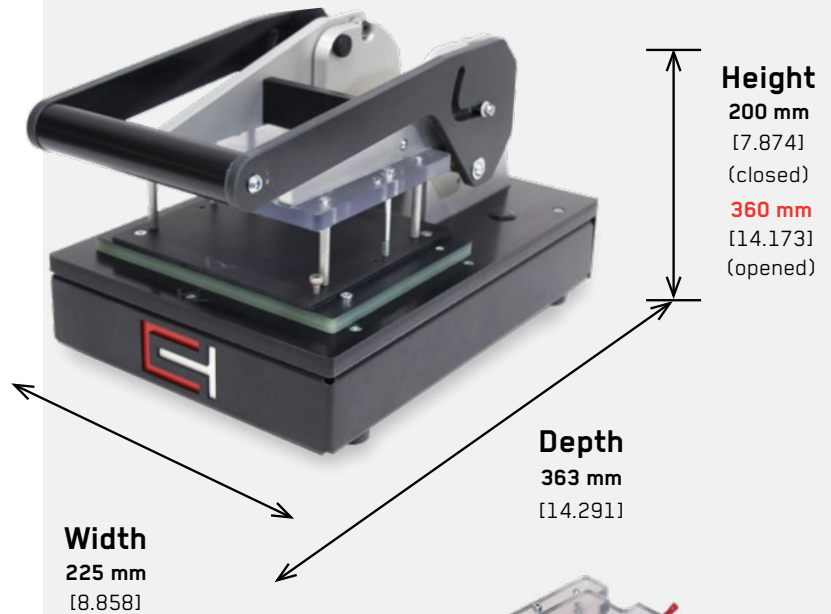
Hand Press Fixture Kit

HPS-12

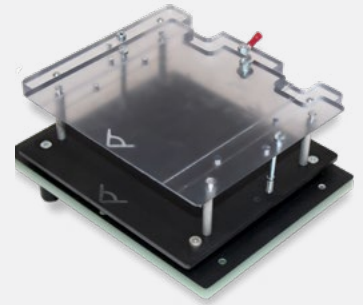
Technical Features:

- Housing Type: Straight with Single Well
- Maximal Usable Area:
125 mm x 125 mm
[4.921 in x 4.921 in]
- Contact Force Generation: Manual
- Ergonomic Handle for easy closing
- Exchangeable Kit (EXCH - HPS - 12)
- Contact Force: maximum 300 N
- Opening Angle (Drive Unit): 80°
- Weight approx. HPS-12: 3.4 kg
- Weight approx. EXCH-HPS-12: 1 kg
- Easy Maintenance & ESD Safe (optional)

Equip **HPS-12**
Hand Press Single Fixture



Equip **EXCH-HPS-12**
Set Intercambiabile



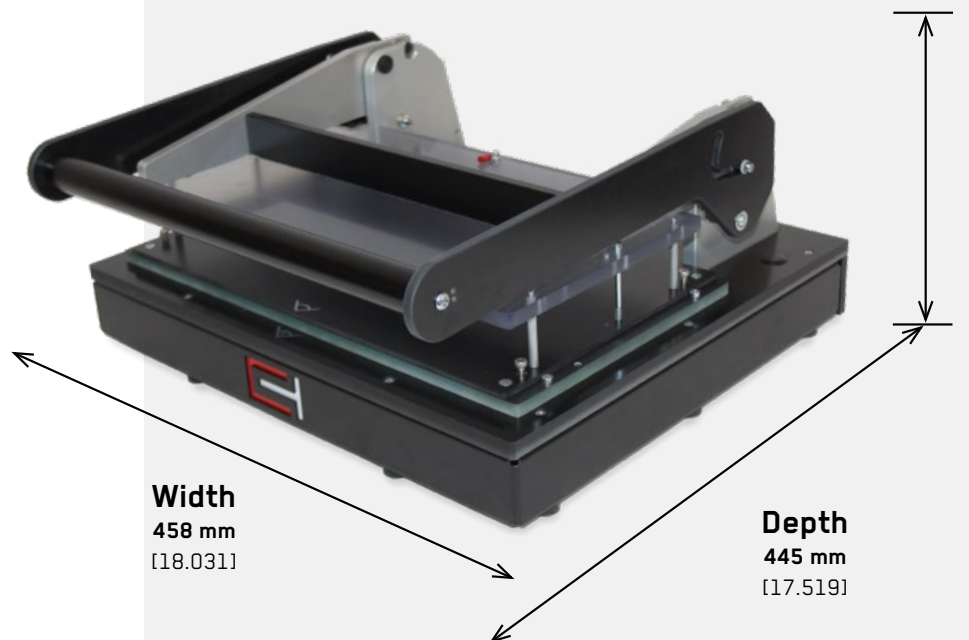
Hand Press Fixture Kit

HPS-35L

Technical Features:

- Housing Type: Straight with Single Well
- Maximal Usable Area:
200 mm x 350 mm
[7.874 in x 13.779 in]
- Contact Force Generation: Manual
- Ergonomic Handle for easy closing
- Easy Maintenance & ESD Safe (optional)
- Exchangeable Kit (EXCH - HPS - 35L)
- Contact Force: maximum 300 N
- Opening Angle (Drive Unit): 80°
- Weight approx. HPS-35L: 5.5 kg
- Weight approx. EXCH-HPS-35L: 3.3 kg

Equip **HPS-35L**
Hand Press Single Fixture



Equip **EXCH-HPS-35L**
Exchangeable Kit

