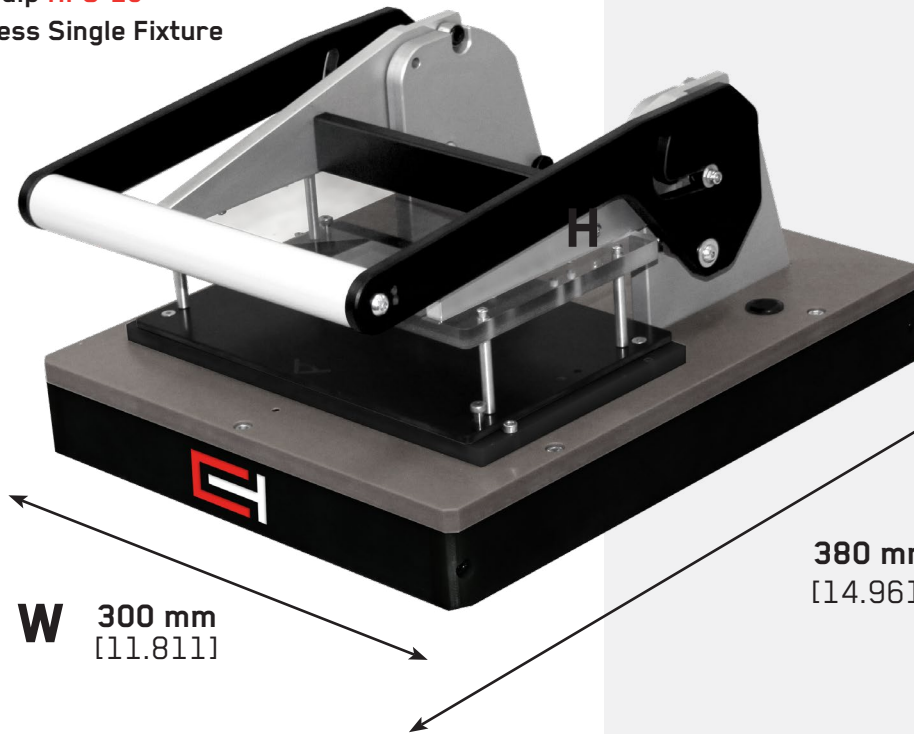


# Hand Press Fixture Kit

## HPS-25

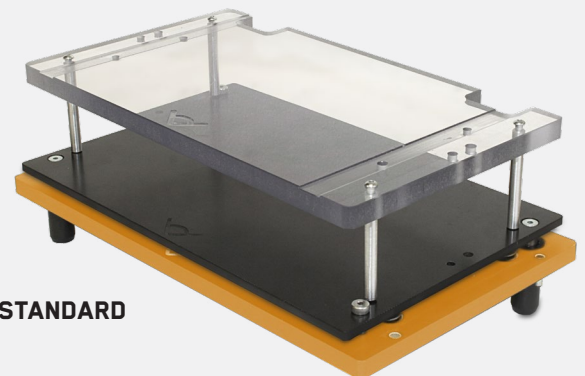
Equip **HPS-25**  
Hand Press Single Fixture



200 mm  
[7.874]  
(closed) **H**  
360 mm  
[14.173]  
(opened)

380 mm  
[14.961] **D**

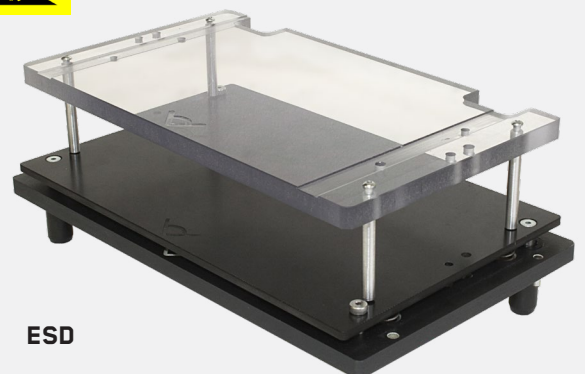
Equip **EXCH-HPS-25**  
Exchangeable Kit (Standard)



STANDARD



Equip **EXCH-HPS-25-ESD**  
Exchangeable Kit (Optional)



ESD

### Technical Features:

- Housing Type: Straight with Single Well
- Maximal Usable Area:  
200 mm x 125 mm  
[7.874 in x 4.921 in]
- Contact Force Generation: Manual
- Ergonomic Handle for easy closing
- Easy Maintenance & ESD Safe (optional)
- Exchangeable Kit (EXCH - HPS - 25)
- Paralell Contact Stroke: 6.4 mm [0.253 in]
- Contact Force: maximum 300 N
- Max. Component Height: 30 mm [1.181 in]  
\*(PCB is 1.60 mm [0.063 in] thick)
- Opening Angle (Drive Unit): 80°
- Weight: approx. 4 kg

