

# INGUN Rigid-Pin Fixture VSN

## Reliable contacting even in the smallest testing grid

The Rigid-Pin Fixture is used for reliable contacting of test points with a high spring force – even in the smallest testing grid.

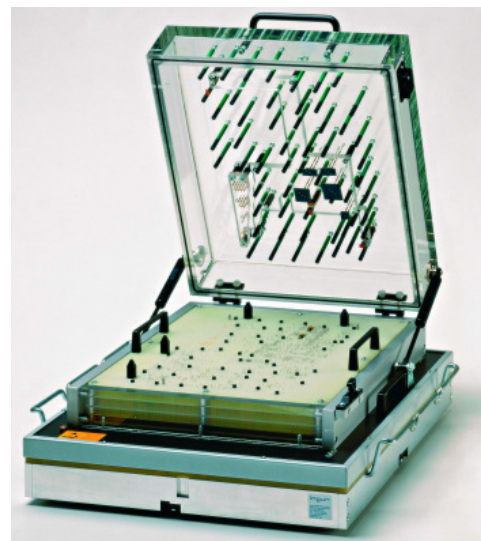
The Rigid-Pin Fixture consists of a standard Vacuum Fixture with spring-loaded Test Probes, which can be individually placed in a grid field, and of a geometrically matched interchangeable Rigid-Pin Cassette with Rigid-Pins that are deflected in a certain angle.

The deflection of the Rigid-Pins to a certain angle is calculated each time by the automatic conversion of the test points, which must be contacted on the grid field. The conversion of the test points is carried out at INGUN.

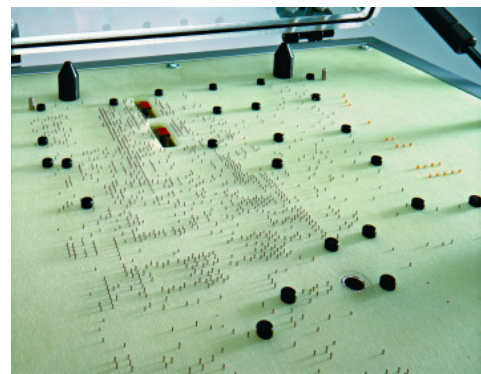
This special design and the precise guiding of the Rigid-Pins in the Rigid-Pin Cassette through to the test point enable reliable contacting even in the smallest testing grid.

For contacting component pins and vias Rigid-Pins with the tip-styles 06 (serrated), 14 (self-cleaning crown) and 91 (Dagger) are available.

The Rigid-Pin Fixture is available for all common Test System Interfaces.



Rigid-Pin Fixture VSN 2070



Rigid-Pin Fixture Cassette VSN 2070

### Special Features:

- Contacting of testing grids down to 0.60 mm (24 Mil) (\*)
- Contacting with an accuracy of  $\varnothing_{TK} = 0.40$  mm
- Simple replacement of the Rigid-Pins without tools
- Testing methods such as e.g. TestJet and Polarity-Check can be integrated with special INGUN Rigid-Pins
- INGUN Marking Units and Operating Elements can be easily integrated

\*: smaller testing grids on request

Prices and Delivery Times on request.  
Technical changes possible without prior notice.

Please contact us for further information.

Part Name	VSN 2030	VSN 2040	VSN 2070
Overall Size (X x Y)	460 x 330 mm	550 x 450 mm	405 x 460 mm
Max. Test Point Size (X x Y)	305 x 155 mm	365 x 295 mm	275 x 325 mm
Max. Usable Area (X x Y)	290 x 140 mm	350 x 280 mm	260 x 310 mm
Part No.	27735	27737	27779